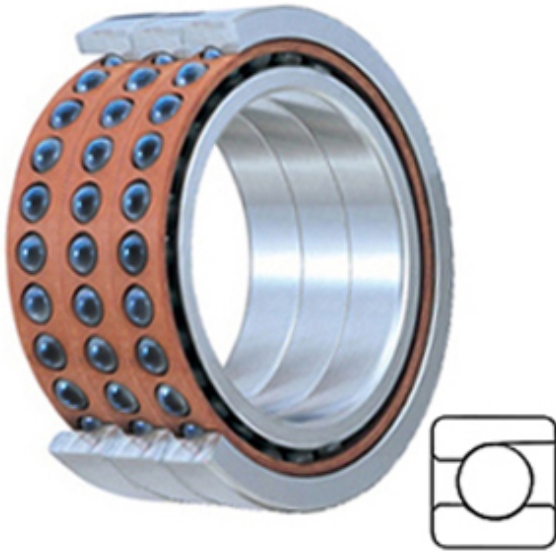




NTN BEARING DRIVESHAFT, INC.



2MMC9100WI TUM Bearing 2D drawings and 3D CAD models

TIMKEN 2MMC9100WI TUM Miniature Precision Ball Bearings

Bearing No. 2MMC9100WI TUM

Category	Miniature Precision Ball Bearings
Inventory	0.0
Manufacturer Name	TIMKEN
Minimum Buy Quantity	N/A
Weight	0.054
EAN	0087796256187
Product Group	B04270
Enclosure	Open
Precision Class	ABEC 7 ISO P4
Flanges	No
Material - Ball	Ceramic
Race Material	Steel
Raceway Style	1 Rib Outer Ring
Number of Bearings	3 (1 Triplex Set)
Contact Angle	15 Degree
Preload	Medium
Cage Material	Phenolic
Rolling Element	Ball Bearing
Mounting Arrangement	Triplex-Universal
Flush Ground	Yes
Inch - Metric	Metric
Other Features	Single Row Angular Contact Super High Precision Hybrid Corrosion Resistant Ball
Long Description	10MM Bore; 26MM



NTN BEARING DRIVESHAFT,INC.

	Outside Diameter; 8MM Inner Race Width; 8MM Outer Race Width; Open Enclosure; ABEC 7 ISO P4 Precision; No Flange; Ceramic Ball Material; Steel Race Material; 3 (1 Triplex Set) Bearin
Category	Miniature Precision Ball Bearings
UNSPSC	31171531
Harmonized Tariff Code	8482.10.50.28
Noun	Bearing
Keyword String	Angular Contact Ball
Manufacturer URL	http://www.timken.com
Manufacturer Item Number	2MMC9100WI TUM
Weight / LBS	0.12
Inner Race Width	0.315 Inch 8 Millimeter
Outer Race Width	0.315 Inch 8 Millimeter
D	1.024 Inch 26 Millimeter
d	0.394 Inch 10 Millimeter
Flange Outside Diameter	0 Inch 0 Millimeter