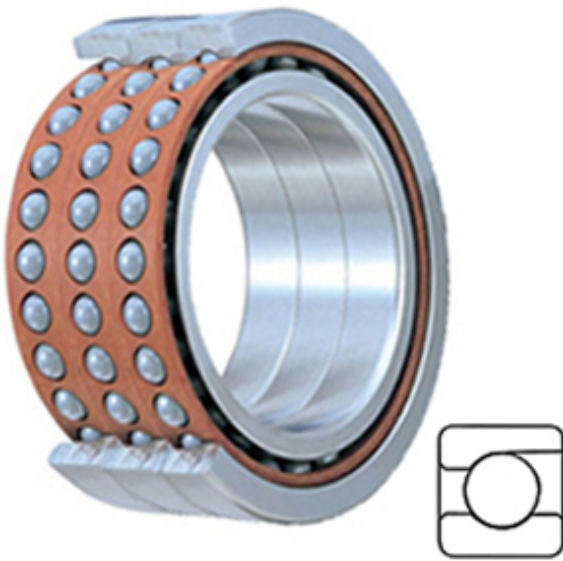




NTN BEARING DRIVESHAFT, INC.

TIMKEN 2MM9300WI TUH Miniature Precision Ball Bearings

Bearing No. 2MM9300WI TUH



2MM9300WI TUH Bearing 2D drawings and 3D CAD models

Category	Miniature Precision Ball Bearings
Inventory	0.0
Manufacturer Name	TIMKEN
Minimum Buy Quantity	N/A
Weight	0.027
EAN	0087796322059
Product Group	B04270
Enclosure	Open
Precision Class	ABEC 7 ISO P4
Flanges	No
Material - Ball	Steel
Race Material	Steel
Raceway Style	1 Rib Outer Ring
Number of Bearings	3 (1 Triplex Set)
Contact Angle	15 Degree
Preload	Heavy
Cage Material	Phenolic
Rolling Element	Ball Bearing
Mounting Arrangement	Triplex-Universal
Flush Ground	Yes
Inch - Metric	Metric
Other Features	Single Row Angular Contact Super High Precision
Long Description	10MM Bore; 22MM Outside Diameter; 6MM



NTN BEARING DRIVESHAFT,INC.

	Inner Race Width; 6MM Outer Race Width; Open Enclosure; ABEC 7 ISO P4 Precision; No Flange; Steel Ball Material; Steel Race Material; 3 (1 Triplex Set) Bearings
Category	Miniature Precision Ball Bearings
UNSPSC	31171531
Harmonized Tariff Code	8482.10.50.28
Noun	Bearing
Keyword String	Angular Contact Ball
Manufacturer URL	http://www.timken.com
Manufacturer Item Number	2MM9300WI TUH
Weight / LBS	0.06
D	0.866 Inch 22 Millimeter
d	0.394 Inch 10 Millimeter
Flange Outside Diameter	0 Inch 0 Millimeter
Inner Race Width	0.236 Inch 6 Millimeter
Outer Race Width	0.236 Inch 6 Millimeter