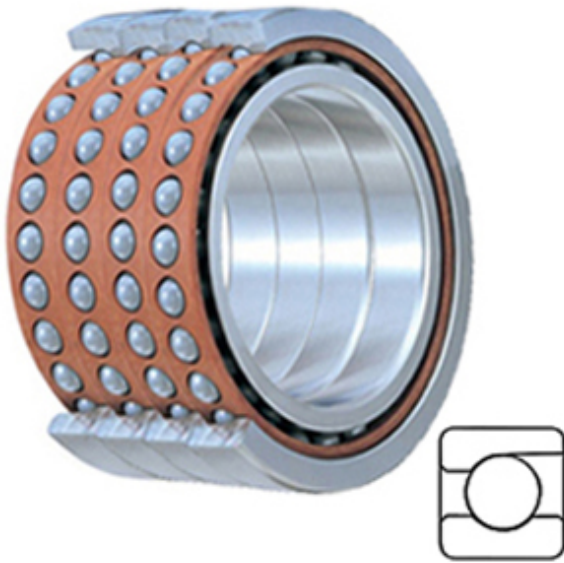




NTN BEARING DRIVESHAFT, INC.



2MM200WI QUH Bearing 2D drawings and 3D CAD models

TIMKEN 2MM200WI QUH Miniature Precision Ball Bearings

Bearing No. 2MM200WI QUH

Category	Miniature Precision Ball Bearings
Inventory	0.0
Manufacturer Name	TIMKEN
Minimum Buy Quantity	N/A
Weight	0.127
EAN	0087796320727
Product Group	B04270
Enclosure	Open
Precision Class	ABEC 7 ISO P4
Flanges	No
Material - Ball	Steel
Race Material	Steel
Raceway Style	1 Rib Outer Ring
Number of Bearings	4 (1 Quadruplex Set)
Contact Angle	15 Degree
Preload	Heavy
Cage Material	Phenolic
Rolling Element	Ball Bearing
Mounting Arrangement	Quadruplex-Universal
Flush Ground	Yes
Inch - Metric	Metric
Other Features	Single Row Angular Contact Super High Precision
Long Description	10MM Bore; 30MM Outside Diameter; 9MM



NTN BEARING DRIVESHAFT,INC.

	Inner Race Width; 9MM Outer Race Width; Open Enclosure; ABEC 7 ISO P4 Precision; No Flange; Steel Ball Material; Steel Race Material; 4 (1 Quadruplex Set) Beari
Category	Miniature Precision Ball Bearings
UNSPSC	31171531
Harmonized Tariff Code	8482.10.50.28
Noun	Bearing
Keyword String	Angular Contact Ball
Manufacturer URL	http://www.timken.com
Manufacturer Item Number	2MM200WI QUH
Weight / LBS	0.28
D	1.181 Inch 30 Millimeter
d	0.394 Inch 10 Millimeter
Outer Race Width	0.354 Inch 9 Millimeter
Inner Race Width	0.354 Inch 9 Millimeter
Flange Outside Diameter	0 Inch 0 Millimeter